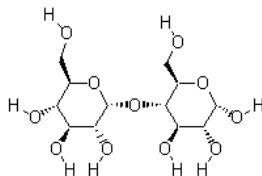


Product Information

STARCH SOLUBLE (EX POTATO) AR

Starch, soluble; Amylodextrin; Amglogen; Sugar polymer



Product Code	T-8015	Grade	Analytical Reagent
Purity	-	CAS No	9005-84-9
Molecular Formula	$(C_6H_{10}O_5)_n$	Molecular Weight	$(162.14)_n$
H.S.Code	3505.1090	Shelf Life	60 Months

Physical Properties

Physical state	Solid	Colour	white
Melting point	256 - 258 °C	Solubility in water	Soluble

Packaging

100 gram

Specification

Appearance	White soft powder
Residu on ignition	max 0.4 %
pH (2 % w/v solution in water at 25 °C)	5.0 - 7.0
Loss on drying at 105 °C	max 15.0 %
Solubility in water	Passes test
Suitability	Passes test for sensitivity as indicator

Safety Information and Hazard Symbols

NO GHS

Symbol: not applicable

Signal Word: not applicable

UN No.: not applicable

IMCO Class No.: not applicable

Packing Group: not applicable

Hazardous Statement: not applicable

Precaution Statement: not applicable

Labotiq